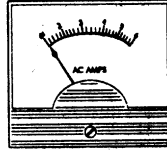
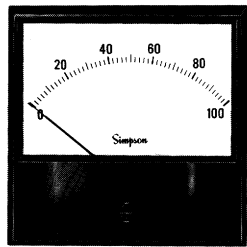


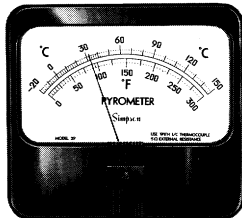
METERS, PANEL



Simpson®



RF AMMETERS (self-shielding)		
RANGE	SIZE	PART #
0-3	2 1/2"	17907 SIM
0-3	3 1/2"	03010 SIM
0-5		03020 SIM



PYROMETER 1% accuracy					
Each pyrometer is furnished with an external, adjustable series resistor to permit use of lower resistance thermocouples in the field. Thermocouples are not included.					
°F	°C	SIZE	thermocouple type required:	max. external resist.	PART #
0 to +500	-20 to +260	4" x 6"	Iron/Constantan (I/C)	10 ohms	21383 SIM

ANALOG PANEL METERS
 •rectangular •linear tracking
 •1 sec. response •accuracy ± 3%

AC VOLTS 2-1/2"

0-10v	8403Z SHU
0-15v	8404Z SHU
0-25v	8412Z SHU
0-50v	8405Z SHU
0-150v	8406Z SHU
0-300v	8407Z SHU
0-55v	8414Z SHU

AC AMPS 2-1/2"

0-500mA	8605Z SHU
0-1A	8501Z SHU
0-5A	8503Z SHU
0-10A	8504Z SHU
0-15A	8508Z SHU
0-30A	8505Z SHU

DC VOLTS 2-1/2"

0-3v	8102Z SHU
0-5v	8104Z SHU
0-10v	8107Z SHU
0-15v	8108Z SHU
0-25v	8109Z SHU
0-50v	8122Z SHU
0-100v	8113Z SHU
0-150v	8115Z SHU
0-300v	8117Z SHU
0-500v	8118Z SHU
150-0-150v	20-2150-20 GC

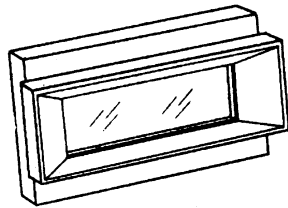
DC AMPS 2-1/2"

0-500µA	8902Z SHU
0-1mA	8336A SHU
0-5mA	8302Z SHU
0-10mA	8303A SHU
0-25mA	8305Z SHU
0-50mA	8306Z SHU
0-100mA	8307Z SHU
0-300mA	8310Z SHU
0-500mA	8312Z SHU
0-1A	8201Z SHU
0-3A	8202Z SHU
0-5A	8203Z SHU
0-10A	8205Z SHU
0-15A	8206Z SHU
0-25A	8207Z SHU
0-50A	8208Z SHU

METERS, PANEL

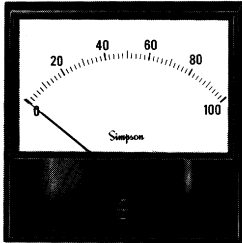
DIGITAL DC VOLTS/AMPS PANEL METERS •Short-Depth (.5" behind panel)

model #	X-32 NLS	X-34 NLS	X-37 NLS
range	100mV 1, 10, 100 & 1000V	200mV 2, 20, 200 & 1000V	same as X-34
digits	3	3.5	3.5
display	.56" LED	.56" LED	.6" LCD
decimal locations	3	4	3
unipolar or bipolar	UNI-POLAR	BI-POLAR	BII-POLAR
accuracy	± 0.2% F.S.	± 0.1% F.S.	± 0.1% F.S.
input Z	100M, 0.1V 1M, 1 & 10 & 100V 4M, 1000V	100M, 0.2V 1M, 2 & 20 & 200V 4M, 1000V	100M, 0.2V 1M, 2 & 20 & 200V 4M, 1000V
power requirements	+5VDC, ±5%, 175mA	+5VDC, ±5%, 200mA	+5VDC, ±5%, 6mA



POWER SUPPLY — All NLS meters require a +5vdc power supply
 DIMENSIONS — 4" x 1.89" face, 1.115" depth. (1/2" behind panel)
 MATING CONNECTOR — 53-106 NLS (required for all meters)
 VOLTAGE RANGE CHANGE KIT — 53-107 NLS (required for all meters)
 CURRENT KIT — 53-108 NLS (required to allow meter to read current)

NLS: 619-535-2161
(phone)



VU METERS			
SCALE	SIZE	PART #	NOTES
-20 to +3 VU	~2 1/2"	8801Z SHU	Inexpensive VU meter
"A" (audio)	2 1/2"	17473 SIM	Stresses the level in Vu for monitoring wire levels
"B" (broadcast)	2 1/2"	17560 SIM	Stresses % use of transmitter output & is the standard for broadcast service. Impedance is 3900 ohms @ "0" VU deflection. Reference level: 1 mW into 600 ohm line.

DIGITAL DC VOLTS PANEL METERS by NLS .3" red LED display

model #	PM-350 NLS
range--Vdc	200mV 2V 20V 200V 1000V
digits	3.5
decimal locations	3
unipolar or bipolar	BI
accuracy	±(.05%rdg+.05% F.S.)
input Z	100M, 200mV 1000M, 2V 1M, 20V 10M, 200V & 100V
features	plug-in components

POWER SUPPLY—All NLS panel meters require a +5vdc ±5% power supply (200mA max. for models shown)
 DIMENSIONS—Face is 3.125" x 1.1875". Depth is 3.375"
 MATING CONNECTOR—#39-195 NLS (required on all models)
 VOLTAGE KIT—required to measure anything beyond 1v
 #39-356 NLS